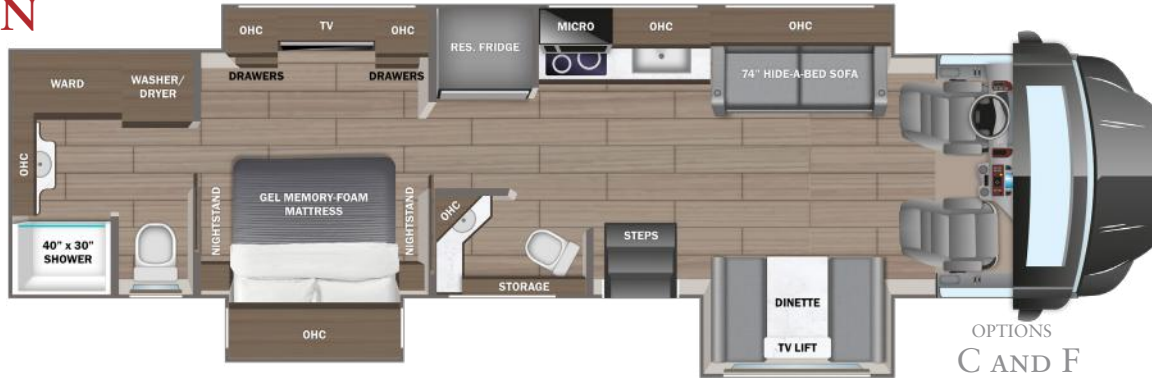


# CENTURION

2026 Diesel Super Class C Motorhome

39N

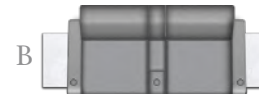


OPTIONS  
C AND F

## OPTIONS



82 in. Hide-A-Bed W/  
End Tables



82 in. Theater Sofa W/  
End Tables



74 in. Theater Sofa



74 in. Hide-A-Bed



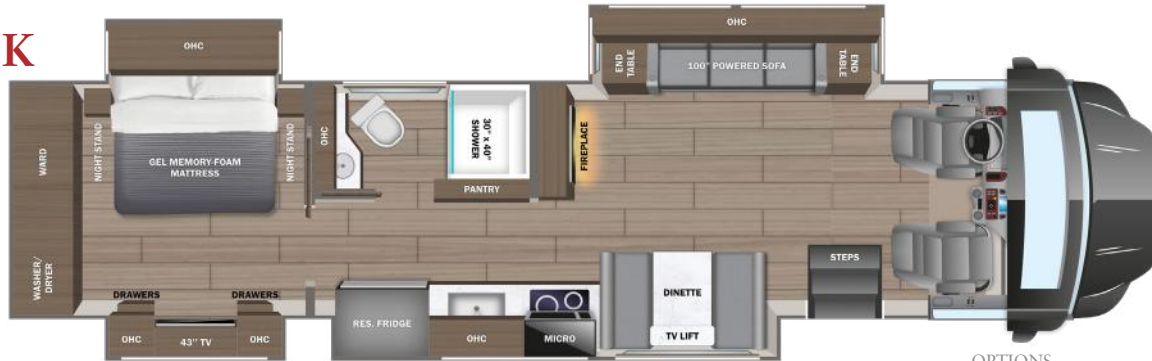
60 in. Sofa



Table & Chairs

OPTIONS  
D, E AND F

39K

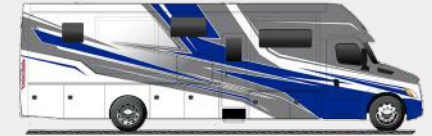


OPTIONS  
A AND B

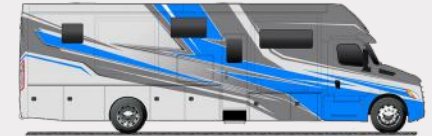
45D



## PAINT SELECTIONS



True Blue Full-Body Paint



Velocity Blue Full-Body Paint



Celtic Gold Full-Body Paint



Midnight Envy Full-Body Paint



Silver Fox Full-Body Paint



Onyx Black Full-Body Paint

# CENTURION

# Standards & Options

## CHASSIS

Freightliner® Cascadia 116 Day Cab (39N, 39K)  
 Freightliner® Cascadia 126 Day Cab (45D)  
 Detroit® DD13 GEN 5 12.8L 525 HP engine with 1,850 torque at 975 RPM (39N, 39K)  
 Detroit® DD16 GEN 15.6L 600 HP engine with 1,850 torque at 1,120 RPM (45D)  
 12-speed overdrive automated manual transmission  
 12V 300-amp alternator  
 1,500W engine block heater  
 Engine brake with global cruise control  
 Detroit® safety assurance package with active break assist 5, adaptive cruise control, active side guard assist and lane departure warning system  
 18,000 lb. rating front axle  
 23,000 lb. rating rear axle (39N, 39K)  
 40,000 lb. rating rear axle (45D)  
 All-wheel air disc brakes  
 2.85 rear axle ratio  
 Michelin® 315/80R 22.5 in. tires (front) and 295/80R 22.5 in. tires (rear)  
 Tire pressure monitoring system (TPMS) with sensors  
 Equalizer™ EQ Hydraulic Smart Level System  
 (3) 12V chassis batteries  
 120 gal. fuel tank  
 13 gal. DEF tank  
 20,000 lb. hitch with 7-pin plug (39N, 39K)  
 30,000 lb. hitch with 7-pin plug (45D)

## CONSTRUCTION

Roof: One-piece, seamless, crowned fiberglass roof  
 Walls: Tuff-Shell™ vacuum-bond laminated sidewalls for superior insulation and sound absorption  
 Floor: Tuff-Shell™ vacuum-bond laminated floor for superior insulation and sound absorption  
 Insulated front and rear cap

## HEAT, A/C, WATER & POWER

8,000W diesel generator with auto-gen start (39N, 39K)  
 12,500W diesel generator with auto-gen start (45D)  
 Victron 3,000W pure sine wave inverter with LED Screen  
 (4) GC2 batteries (6V/224 amp hrs. ea.)  
 400W's of solar power  
 50-amp power cord on electric powered reel  
 Automatic transfer switch with surge protection  
 (2) 15,000 BTU units with heat pumps (39N, 39K)  
 (3) 15,000 BTU A/C units with heat pumps (45D)  
 Aqua-Hot® 250D hydronic water and heating system with 5 in. LED screen (39N, 39K)  
 Aqua-Hot® 450D hydronic water and heating with engine preheat (45D)  
 Aqua-Hot® heated basement storage  
 Sani-Con® macerator holding tank dump system with manual gate valves and manual backup  
 Black tank flush  
 City and tank water filtration system  
 Hot and cold water hook-up in Wet Bay  
 Water hose with electric reel

## EXTERIOR

Sikkens custom full-body paint  
 Carefree® slideout awnings  
 Batten house insulated front cap  
 Square Frameless, dual-pane, tinted, safety-glass windows  
 LED accent lights under all slideout rooms  
 Electric-powered entrance step  
 Keypad system for keyless entry  
 Diamond Shield™ front protective film mask  
 LED high and low beam headlights  
 LED marker lights, turn lights, license plate light, third brake light, accent lights and docking lights  
 Porch light and motion sensor security lights  
 Winegard Connect 2.0 Wi-Fi/4G antenna  
 Heated exterior utility center with SeeLevel™ tank monitoring system  
 Carpeted, full pass-through storage compartments with lockable slam latch door  
 Roof-mounted dual pitch integrated power patio awning with LED lights

## COCKPIT

360° HD digital camera system  
 Powered front cap privacy shade  
 Adjustable air-ride leather driver/passenger seats

## INTERIOR

Firefly multiplex system with 10 in. VegaTouch touchscreen for complete integration of coach controls (mobile app available)  
 50 in. Smart TV in living room  
 Soundbar in living room  
 Premium leather Villa furniture  
 Hand-laid, porcelain tiled floors  
 Decorative ceiling feature with integrated accent lighting  
 Solar day shades and blackout night shades  
 Dirt Devil central vacuum system with in-wall dust pan  
 In-floor heating throughout  
 LED-lit fireplace with 5,000 BTU heating element (39K only)  
 Powered flush stepwell cover  
 Carbon monoxide detector  
 Smoke alarm

## KITCHEN

Recessed induction cooktop with solid surface covers  
 Convection microwave with air fryer function  
 Stainless steel residential refrigerator  
 Hardwood cabinets and stiles throughout with dovetail construction  
 Adjustable shelves  
 Stainless steel sink

## BEDROOM

Gel memory-foam mattress  
 Solid-surface countertops and dimmable LED accent lighting  
 Nightstands with solid-surface tops  
 Smart TV in bedroom

## BATHROOM

Solid-surface countertops with single sink and dimmable LED accent lighting  
 Fiberglass pan, solid surface with tile insert  
 Teakwood shower seat  
 Aqua View SHOWERMISER™ water saving system  
 Porcelain toilets  
 Power exhaust vent in bathroom  
 Stacked washer and dryer

## OPTIONS

Freestanding table with 4 chairs (39N, 45D)  
 Fisher & Paykel dishwasher  
 Winegard® in-motion satellite dome  
 Canadian Shaw Trav'ler satellite dish  
 Trav'ler Direct TV satellite dish  
 Starlink Satellite Internet Service  
 Starlink Satellite High Performance Internet Service  
 74 in. Theater seating sofa (39N )  
 82 in. Theater seating with end tables (39K)  
 82 in. HAB sofa with end tables (39K)  
 74 in. Hide-a-bed sofa with opposing 60 in. sofa (45D)

## NO ONE OFFERS A BETTER WARRANTY

**2+3**  
**YEAR | YEAR**  
 LIMITED | STRUCTURAL  
**WARRANTY**

At Entegra Coach, we build our RVs to handle every adventure, then back them with our industry-leading 2+3 limited warranty. Our 2-year limited warranty has you covered for 2 camping seasons. That's 730 days. In addition, our 3-year structural limited warranty has you covered for 3 camping seasons or 1,095 days. You won't find a better limited warranty in the business, because the only strings we attach are those that deliver the ultimate in reliability. For a copy of our 2-year limited + 3-year structural limited warranty with complete terms and conditions, please contact your local Entegra Coach dealer.

Floorplan	GVWR (lbs.)	GCWR (lbs.)	Wheel Base	Overall Length	Exterior Height w/ A/C & Satellite	Exterior Width	Interior Height	Fresh Water Capacity (gal.)	Grey Waste Water Capacity (gal.)	Black Waste Water Capacity (gal.)
39N	41,000	61,000	312"	42' 0"	12' 6"	104"	84"	100	73	40
39K	41,000	61,000	312"	42' 0"	12' 6"	104"	84"	100	82	50
45D	58,000	80,000	349"	45' 10"	12' 6"	104"	84"	100	73	40

It is important for your safety and enjoyment that you are aware of the weights and tow ratings of the RV you select. Consult a competent advisor for questions or advice. Whether you are new to RVing or a veteran, get a feel for the performance of your RV before heading out on the roadways. When you tow a vehicle with your RV, you must drive differently than when you drive a single vehicle. Practice hooking up, driving, backing up and braking in a safe environment or seek out professional instruction. Jayco affixes a weight label to each RV which lists weight information for that vehicle. Refer to that label to verify the vehicle will meet your requirements. Gross Vehicle Weight Rating (GVWR): The maximum permissible weight of the motorhome, including the Unloaded Vehicle Weight (UVW) plus passengers, personal items, all cargo, fluids, options and dealer-installed accessories. The GVWR is equal to or greater than the sum of the UVW and the Cargo Carrying Capacity. Gross Combined Weight Rating (GCWR): The maximum allowable combined weight of the motorhome used as a tow vehicle and the attached towed vehicle.



Entegra Coach, Inc., P.O. Box 460, Middlebury, IN 46540, www.entegracoach.com. See dealer for further information and prices. All information in this brochure is the latest available at the time of publication approval. Entegra Coach reserves the right to make changes and to discontinue models without notice or obligation. Photos in this brochure may show optional equipment and props for photography purposes. RVs built for sale in Canada may differ to conform to Canadian codes. ©2025 Entegra Coach, Inc. Printed in U.S.A. 2033082



LEGACY ISN'T LEFT,  
IT'S LIVED.